

# Transport Access Program Clarendon Station Upgrade

## Community Notification

April 2024



Transport for NSW acknowledges the Dharug people of the Dharug Nation as the Traditional Custodians of the lands on which we work and pays respect to Elders past and present.

### Transport for NSW is improving access at Clarendon Station.

#### What work are we doing?

Major work to improve accessibility and increased commuter car parking at Clarendon Station was completed in December 2022.

In the coming months, further work will occur at the station to make improvements to the station level crossing. The work will help prevent wheelchairs, bicycles and pram wheels getting caught in the rail tracks. Work during April will include:

- installing a heavy-duty rubber product called VeloSTRIAL to fill the gap between the rail tracks and walking deck
- installing tactiles
- asphaltting work.

#### When we will be working

Weekend work will be carried out between **4am Saturday 27 April and 6pm Sunday 28 April 2024.**

For the safety of staff and customers, this work will take place during a scheduled Sydney Trains trackwork period when no trains are running, and the station is closed.

Wherever possible, we will take measures to reduce noise, including turning off vehicles and equipment when not in use, exercising respite periods during work and using non-tonal reversing beepers.

Equipment being used includes lighting towers, excavators and delivery trucks, concrete trucks and pump, dump trucks and hand tools.

#### Traffic changes

To enable safe construction, we will require a temporary full road closure of the Clarendon Station level crossing between Hawkesbury Valley Way and Racecourse Road from **4am Saturday 27 April and 6pm Sunday 28 April 2024.** Traffic control and detours will be in place. Pedestrian access across the station will be maintained. Access to Racecourse Road will remain open via Blacktown Road. Please see map overleaf.

#### How will the work affect you?

You may notice:

- road closures and reduced speed limits
- pedestrian and cyclist detours with traffic controllers on site
- up to 10 commuter car parking spaces will be temporary unavailable
- workers and vehicles
- noise from machinery and equipment.

#### Managing our impacts

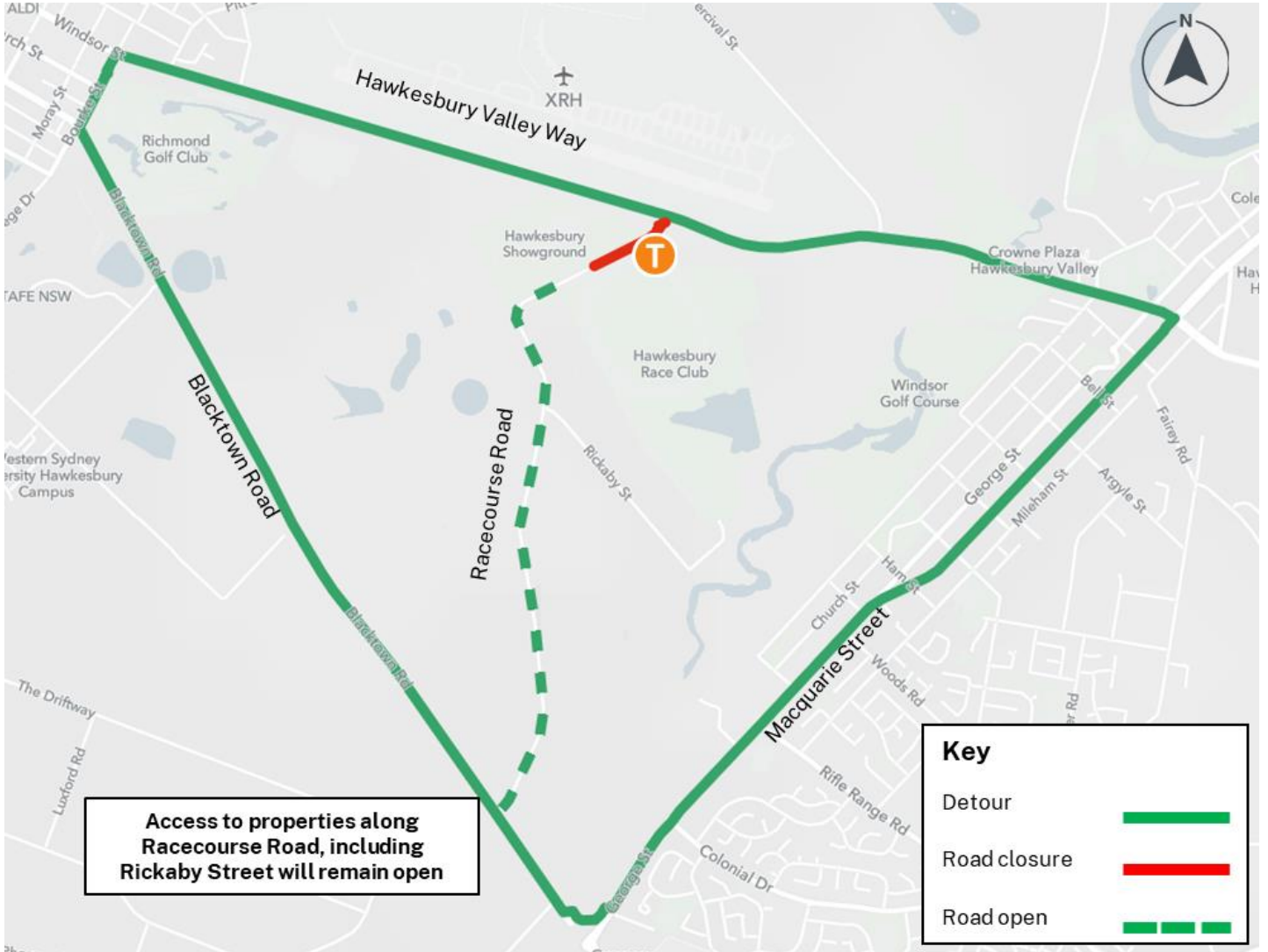
We aim to manage our work to avoid impacts to the community and the environment.

This includes:

- fencing for safety and security
- reducing our noise as much as possible
- targeted lighting to minimise light spill.



## Location of road closure and detour routes from 4am Saturday 27 April and 6pm Sunday 28 April 2024



## Contact us



Project Infoline **1800 684 490**  
24-hour Construction Response Line  
**1800 775 645**



[projects@transport.nsw.gov.au](mailto:projects@transport.nsw.gov.au)



[www.transport.nsw.gov.au/  
clarendon-station-upgrade](http://www.transport.nsw.gov.au/clarendon-station-upgrade)



PO Box K659,  
Haymarket NSW 1240



**For the latest traffic updates:**  
Call 132 701, visit [livetraffic.com](http://livetraffic.com) or  
download the app Live Traffic NSW



### Interpreter service

For languages other than English call 131 450  
Arabic • Greek • Hindi • Mandarin • Vietnamese

لطلب خدمة الترجمة الشفهية للغات غير الإنجليزية اتصل  
بالرقم **131 450**

Για υπηρεσίες διερμηνείας σε άλλες γλώσσες εκτός από  
τα Αγγλικά καλέστε το **131 450**

अंग्रेजी के अतिरिक्त अन्य भाषाओं के लिए दुभाषिया सेवा  
**131 450** पर कॉल करें

获取英语以外的其他语言口译协助服务可以致电**131 450**

Để có dịch vụ thông ngôn cho các ngôn ngữ khác tiếng  
Anh, gọi số **131 450**

[www.transport.nsw.gov.au/privacy-statement#Your\\_Privacy](http://www.transport.nsw.gov.au/privacy-statement#Your_Privacy)