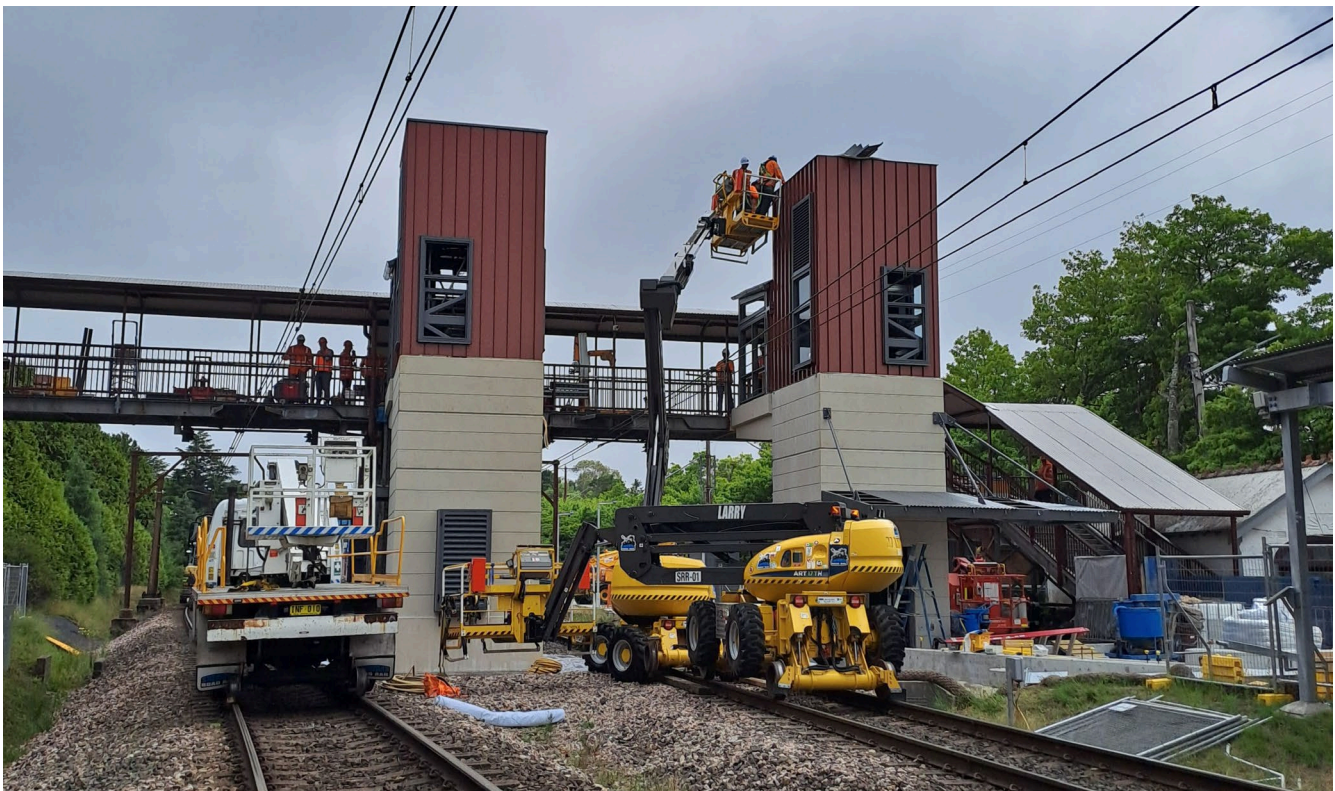


Blackheath Station Upgrade

Community Update | April 2023

Transport for NSW is upgrading Blackheath Station, with the work expected to be completed in late 2023.

The project is being delivered as part of the Transport Access Program, which aims to provide station precincts that are accessible to people with a disability, limited mobility, parents/carers with prams and customers with luggage.



Above: Installation of new lifts and cladding during a scheduled Sydney Trains possession weekend in February 2023.

Upcoming work

Construction on the Blackheath Station Upgrade is progressing well. Activities will continue in April and over the next month including:

- Service installation works to new lift shafts
- Roofing, cladding and glazing works to new lift shafts
- Installation of tactiles on the station platform
- Service installation to station building and station precinct
- Civil and landscaping works at station entrances and commuter car park

- Resurfacing and extension in the commuter car park
- Modifications to existing footbridge to facilitate new lift landings
- Door widening works to the station building
- Power supply upgrade works

Equipment to be used includes surveying equipment, mobile crane, small drilling rig, excavators, trucks, concrete pumps, power and hand tools.

Commuter Car Park Closure

To enable the commuter car park upgrade, the car park will be closed from **Monday 17 to Friday 28 April 2023**, weather permitting.

Construction hours

Standard construction hours are **7am to 6pm Monday to Friday** and **8am to 1pm on Saturdays**.

For the safety of staff, customers and the community, some work will be completed outside standard construction hours.

We will notify nearby residents and businesses in advance if additional night or weekend work is required.

Keep in touch

We will continue to keep the community informed with regular project updates.

Further information is available on the project website: transport.nsw.gov.au/blackheath-station-upgrade.

If you would like to be added to the project distribution list, or for more information on the Blackheath Station Upgrade, please contact us on **1800 684 490** or email projects@transport.nsw.gov.au.

For all urgent enquiries or complaints regarding construction activities, please call our 24-hour Construction Response Line on **1800 775 465**.

Contact us

If you have any questions or would like more on the Blackheath Station Upgrade, please contact our project team:



1800 684 490



projects@transport.nsw.gov.au



transport.nsw.gov.au/blackheath-station-upgrade



231 Elizabeth St, Sydney NSW 2000
PO Box K659, Haymarket NSW 1240



If you need help understanding this information, please contact the Translating and Interpreting Service on **131 450** and ask them to call us on **1800 684 490**