

Transport Access Program

Bellambi Station Upgrade

Community notification

March and April 2023



Transport for NSW acknowledges the Woddi Woddi people of the Dharawal Nation as the Traditional Custodians of the lands on which we work and pay respects to Elders past and present.

Transport for NSW is upgrading accessibility at Bellambi Station. This upgrade is being delivered as part of the Transport Access Program.

Completed work

Work on the new station building continued in February, with cladding of the outside walls, internal fit-out (including internal walls and linings), electrical services and plumbing services commencing.

Service containment work continued along the rail corridor fence next to the car park.

Upcoming work

Work on the new station building will continue in March with internal fixtures and external cladding planned to be completed.

Upgrades to the new bathrooms, the station master's office fit-out and services inside the new station building also continuing.

Out-of-hours work

Out-of-hours work will be carried out between **6am Friday 7 April** and **6pm Monday 10 April**. For the safety of staff and customers this will take place during a scheduled Sydney Trains trackwork period when no trains are running, and the station is closed.

Work to be completed includes removing the pedestrian access ramp from the level crossing to the platform and installing a new ramp.

This work may generate higher than normal levels of noise. Once noise assessments have been carried out, respite vouchers may be offered to residents immediately surrounding the work areas.

Wherever possible, we will take measures to reduce noise, including turning off vehicles and equipment when not in use, exercising respite periods during work and using non-tonal reversing beepers. Equipment being used includes excavators and delivery trucks, concrete trucks and pump, rail vehicles, dump trucks and hand tools.

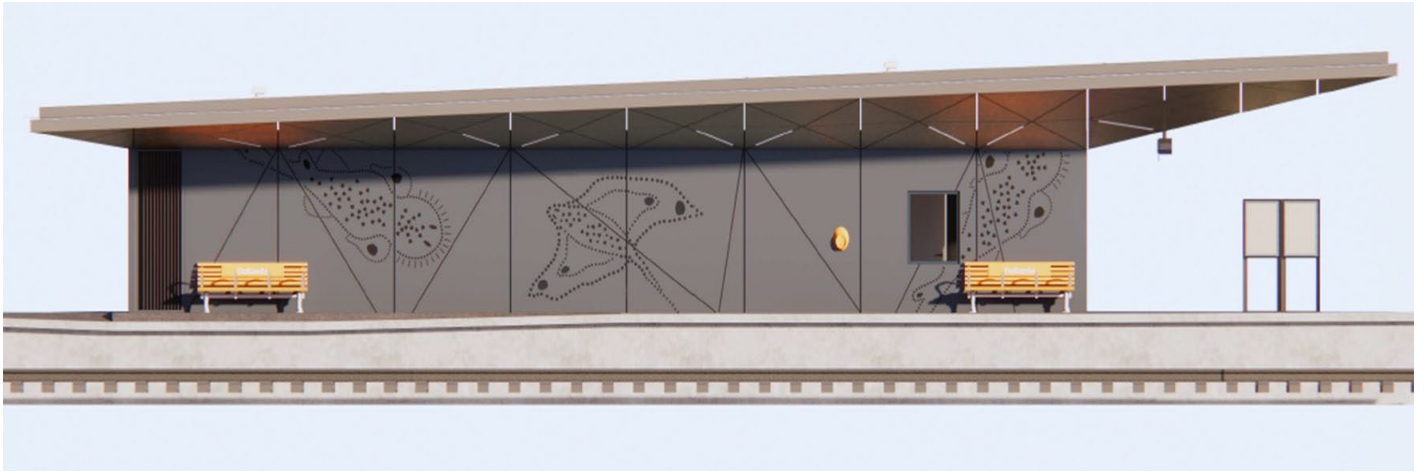
Working hours

Aside from weekend work mentioned above, normal working hours will continue between **7am to 6pm Monday to Friday** and **8am to 1pm Saturdays**.

Commuter car park

The commuter carpark will be closed from **31 March until 13 April** to enable the safe delivery of materials and work to continue.





Artist's impression of the new station building with custom-designed Aboriginal artwork engraved into wall cladding. Installation of wall panels will be completed in March.

Contact us



Project Infoline **1800 684 490**
24-hour Construction Response Line
1800 775 645



projects@transport.nsw.gov.au



transport.nsw.gov.au/bellambi



Interpreter service

For languages other than English call 131 450
Arabic • Cantonese • Hindi • Mandarin • Vietnamese

لطلب خدمة الترجمة الشفهية للغات غير الإنجليزية اتصل بالرقم
131 450

獲取英語以外的其他語言傳譯協助服務可以致電**131 450**

अंग्रेज़ी के अतिरिक्त अन्य भाषाओं के लिए दुभाषिया सेवा **131 450**
पर कॉल करें

获取英语以外的其他语言口译协助服务可以致电**131 450**

Để có dịch vụ thông ngôn cho các ngôn ngữ khác tiếng Anh,
gọi số **131 450**