



# Transport Access Program

## Como Station Upgrade

**Project completion**

**November 2021**



*Finishing touches being done, before opening of the lift and stairs from Como Parade to the underpass.*

### Como Station Upgrade is now complete

Thank you for your patience and cooperation throughout the construction. All upgraded facilities are now available to customers.

- ✓ two new lifts connect the platform and commuter car park to the underpass
- ✓ upgraded station entry, including new stairs from Como Parade
- ✓ accessible parking spaces are now located closer to the new lifts
- ✓ formalised kiss and ride area, new carpark surfaces and station fencing
- ✓ all pathways now accessibly compliant
- ✓ a new family accessible toilet and male and female ambulant toilets
- ✓ new platform canopy with solar PV Glass, designed to produce 58 kWh of clean, renewable energy every day
- ✓ power supply upgrade, new CCTV and lighting

#### Key facts



Over **700** people worked on this project



**65 000** hours worked onsite



**100%** of the station's daytime energy needs comes from the solar glass canopy



**96%** of construction waste was recycled

For more information call **1800 684 490**

Email [projects@transport.nsw.gov.au](mailto:projects@transport.nsw.gov.au) or visit [www.transport.nsw.gov.au/como](http://www.transport.nsw.gov.au/como)

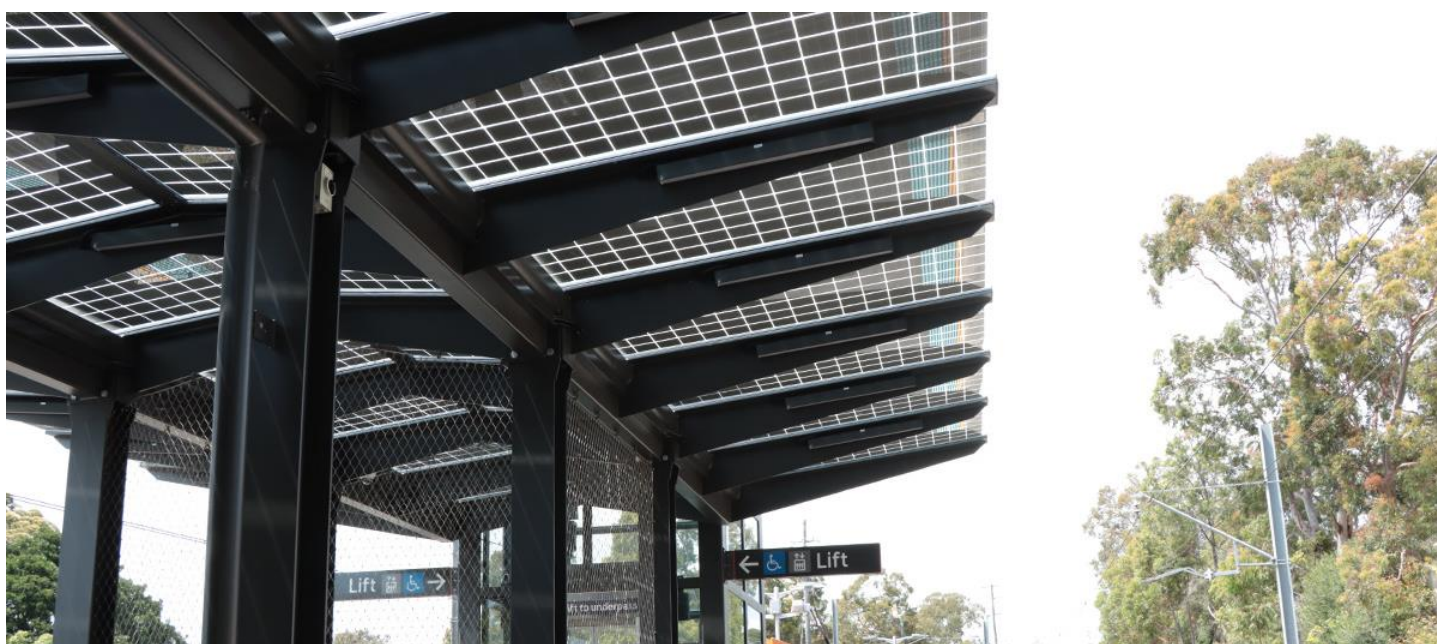
For urgent enquiries or complaints regarding construction activities, please call 24 hours **1800 775 465**

## Finishing work

Some final planting and landscaping are being undertaken during the first few weeks of November; the site offices, storage, and laydown area will also be removed in stages before 19 November 2021.



*The lift brings customers from the underpass directly to the platform and the new Solar Glass canopy provides extra shelter.*



*The solar PV Glass canopy is the first of its type in the NSW Rail Network.*

### Solar PV Glass Canopy

The Solar Photovoltaic Glass (PV) system provides a reliable, clean source of power during the daytime and increases the resilience of Transport for NSW's energy supply. This solution demonstrates how alternative technology and innovative ideas can be integrated into the building fabric within the rail corridor whilst also having a strong visual aesthetic. The design's success demonstrates leadership in sustainable infrastructure and commitment to innovation, clean energy, and future smart solutions.

*The Solar PV Glass Canopy design has been successfully entered into Banksia NSW Sustainability Awards and has proceeded to Round 2. The winner will be announced in late 2021.*

For more information call **1800 684 490**

Email [projects@transport.nsw.gov.au](mailto:projects@transport.nsw.gov.au) or visit [www.transport.nsw.gov.au/como](http://www.transport.nsw.gov.au/como)

For urgent enquiries or complaints regarding construction activities, please call 24 hours **1800 775 465**