

# Transport Access Program

## Casino Station Upgrade

### Project update

#### [The NSW Government is improving accessibility at Casino Train Station](#)

Transport for NSW is upgrading Casino Train Station as part of the Transport Access Program. The upgrade will provide a station that is accessible to those with a disability or limited mobility, parents/carers with prams and customers with luggage.

Work started in September 2022, which included moving the ticket office and waiting area to a temporary location to allow internal renovation work to start.

From Tuesday 22 November to February 2023 we will be carrying out demolition work at the station entry including the veranda and surrounding footpaths. At this time, the bus and coach bays will be relocated to the existing carpark, which will reduce the number of parking spaces. There will be no impact to bus and train timetables while we carry out this work.

#### [Construction hours](#)

Working hours are from 7am to 6pm Monday to Friday, and 8am to 1pm on Saturday. No work will be carried out on Sundays or on public holidays. We will notify nearby residents and businesses in advance if we need to work outside these times.

#### [How will this work affect you](#)

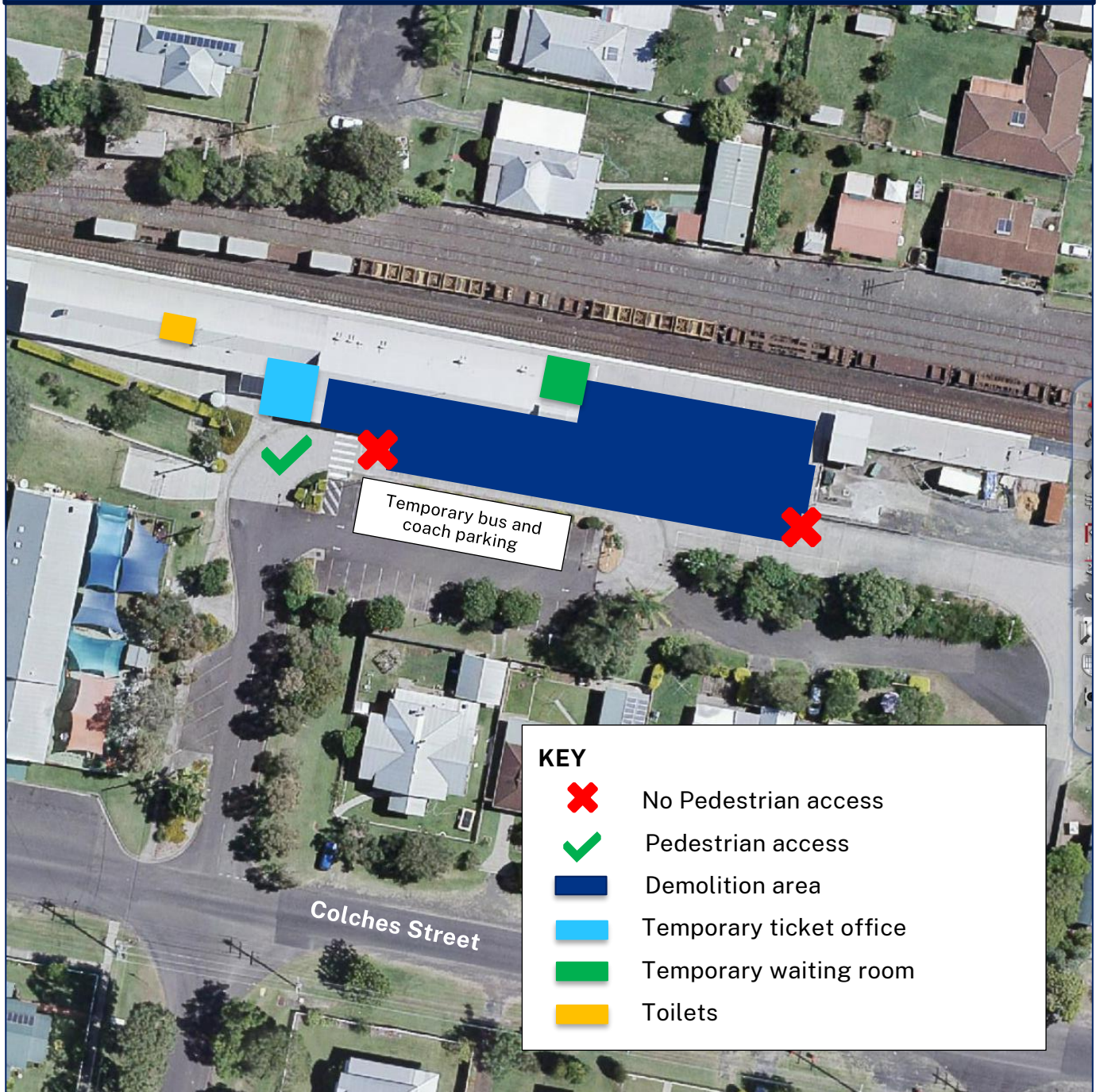
This work will involve use of machinery which generate noise and vibration. We will make every effort to minimise these impacts by turning off machinery and vehicles when not in use.

#### [Traffic changes](#)

There will be temporary traffic changes to ensure the safety of pedestrians and motorists and to accommodate temporary bus access. Traffic control and signage will be in place to help pedestrians and motorists.

We will notify residents and businesses in advance of changes to station access.

Temporary pedestrian access and relocated bus and coach bays



## Contact us

If you have any questions or would like more information, please contact our project team:

1800 684 490 (or 1800 775 465 for urgent enquiries)

[projects@transport.nsw.gov.au](mailto:projects@transport.nsw.gov.au)

[www.transport.nsw.gov.au-casino](http://www.transport.nsw.gov.au-casino)

## Translating and interpreting service

If you need help understanding this information, please contact the Translating and Interpreting Service on 131 450 and ask them to call us on 1800 684 490.

