



# Transport Access Program

## Como Station Upgrade

**Project update**

**May 2021**

Transport for NSW is upgrading Como Station to make it easier for everyone to access, including people with a disability or limited mobility, parents/carers with prams, and customers with luggage.



*Image: Excavation detail on Como Parade, April 2021*

## Upcoming work

Construction of the Como Station Upgrade is currently underway. Work will continue throughout May and includes:

- continued refurbishment and upgrade work to the toilets located within the station building
- continued excavation near the Como Parade entrance
- concrete pours for the new lift shaft, retaining walls and station stairs on Como Parade
- installation of rock anchors near the Como Parade entrance
- installation of louvres to lift shaft on platform lift
- steel frame installation for Como Parade lift
- finishing install of security fences to Railway Road
- vegetation removal in rail corridor closest to Railway Road
- electrical upgrade work to station building

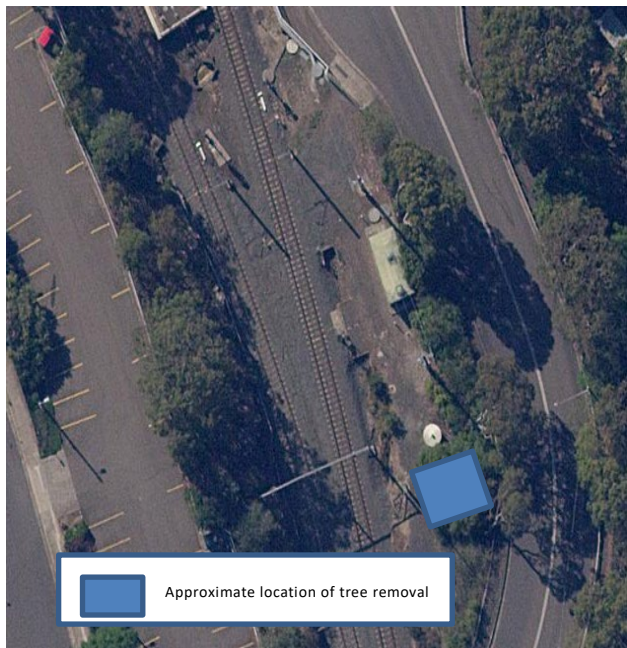
Equipment to be used includes excavators, hammer drills, bobcats, concrete trucks and pumps, hand held saws and power tools.

For more information call **1800 684 490**,

Email [projects@transport.nsw.gov.au](mailto:projects@transport.nsw.gov.au) or visit [www.transport.nsw.gov.au/como](http://www.transport.nsw.gov.au/como)

For urgent enquiries or complaints regarding construction activities, please call 24 hours **1800 775 465**

## Vegetation removal



Pending approvals, **from Monday 10 May**, vegetation removal will take place in the rail corridor between Railway Road and the underpass bridge to enable the construction of an upgrade electrical facility.

An assessment has been carried out by a qualified arborist and it has been determined the trees cannot be retained.

Trees will be offset in accordance with the Transport for NSW Biodiversity Offset Strategy.

An arborist will be on site to monitor the removal.

The work will be carried out during standard construction hours **7am and 6pm**.

Equipment to be used includes chainsaws, hand tools and a chipper. The branches and vegetation will be mulched in the site compound and retained for future use.

## Upcoming night work

Pending relevant approvals, night work is planned to take place from **8:30pm to 4am Wednesday 26 May and Thursday 27 May 2021**. Some of this work will take place in the rail corridor and needs to be carried out during a scheduled Sydney Trains track work period when trains are not running for the safety of customers, workers and the wider community.

Work will include the use of a crane that will be situated on Railway Road to install electrical equipment. This work is necessary to complete a station wide electrical upgrade. There may be impacts to traffic during the evenings, traffic control will be on site to facilitate safe vehicle movements.

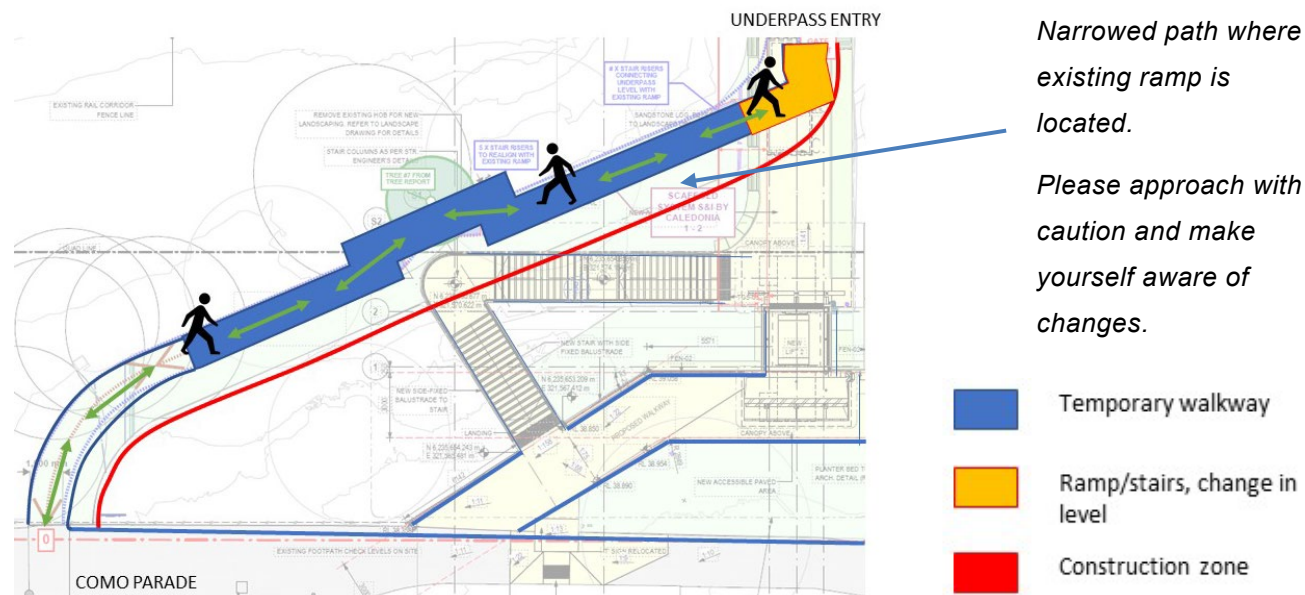
Work is also occurring in the station underpass with stair upgrade, including grinding, nosing replacements and painting. Access onto the station platform will still be available when trains are running, however unavailable when trains are not running.

This work may generate higher than normal level of noise. Wherever possible measures to reduce noise will be implemented including turning off vehicles and equipment when not in use, monitoring noise, exercising respite periods during work and using non-tonal reversing beepers.

## Temporary changes to access for pedestrians

From **mid-April**, access was reinstated to and from Como Parade via the station underpass. There have been some changes to the reinstated access including a ramp, narrow pathway and stairs near the station entry. Customers requiring ramp-only access will need to continue to access the station via the existing Railway Road bridge detour.

The area surrounding the Como Parade station entrance will be used for minor construction activities including the movement of excavated materials. Short intermittent closures may occur, however these closures will be scheduled outside of peak hours and between train arrivals to minimise the disruption to the community.



Map of temporary access to and from Como Parade for pedestrians

## Temporary changes to the station toilets

Work is underway to refurbish the station toilets. Once complete, the station will feature new male and female ambulant toilets and a new family accessible toilet. To enable this upgrade, **one toilet within the station building will be temporarily closed until mid-May 2021**. The remaining toilet will be operating as a unisex toilet during this time. Signage has been installed to help customers with these temporary changes.

## Ongoing temporary changes to parking

Up to 20 parking spaces are temporarily closed in the northern end of the Commuter Car Park until **July 2021**. Whenever possible, parking spaces will be reopened and made available for customer use during these times. These temporary closures are essential to enable safe excavation, concrete pours, and initial installation work for the new lift. Parking will be reinstated gradually as construction progresses. Traffic control measures will be in place for the safety of motorists and pedestrians, as required.

## Construction hours

To support the industry and continue the delivery of critical infrastructure, the NSW Government has introduced new rules allowing construction sites to operate on weekends and public holidays. Standard construction hours are now **7am to 6pm every day, including Sundays and public holidays**. These changes have been made to facilitate social distancing on construction sites and support the health and wellbeing of workers.

## Keep in touch

We will continue to keep the community informed with regular project updates. Further information is available on the project website [www.transport.nsw.gov.au/como](http://www.transport.nsw.gov.au/como). If you would like to be added to the project distribution list, please contact us on **1800 684 490** or email [projects@transport.nsw.gov.au](mailto:projects@transport.nsw.gov.au)

For all urgent enquiries or complaints regarding construction activities, please call our 24-hour Construction Response Line on **1800 775 465**.



This document contains important information about public transport projects in your area. If you require the services of an interpreter, please contact the Translating and Interpreting Service on **131 450** and ask them to call Transport for NSW on **1800 684 490**. The interpreter will then assist you with translation.