



# Transport Access Program

## Banksia Station Upgrade

Project Update

June 2021

Transport for NSW is improving accessibility at Banksia Station. The upgrade will provide a station precinct that is accessible to people with a disability or limited mobility, parents/carers with prams, and customers with luggage.

### Weekend work in June 2021

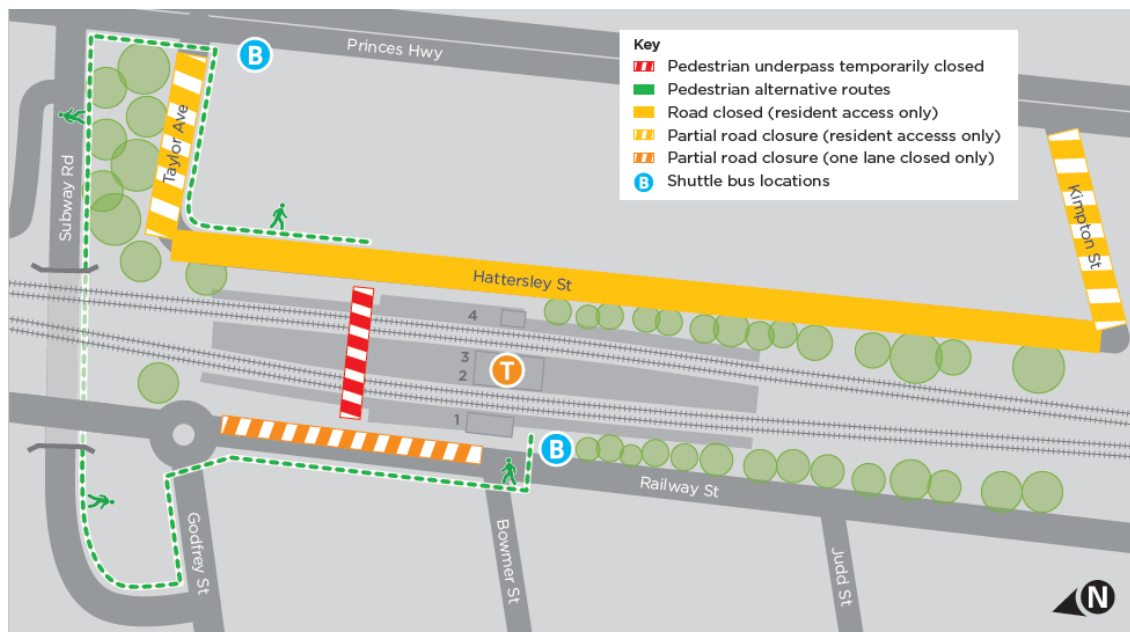
For the safety of our workers, pedestrians and motorists, work will take place during a scheduled Sydney Trains trackwork period, when the trains are not running.

Work will take place over two weekends from **6am Saturday 19 June to 7pm Sunday 20 June** and from **6pm Friday 25 June to 6am Monday 28 June**, weather permitting.

During the second weekend period, **6pm Friday 25 to 6am Monday 28 June**, the station underpass will be closed. Please see map overleaf for the pedestrian detour.

Please visit [www.transportnsw.info](http://www.transportnsw.info) or call **131 500** for up to date information regarding service updates and replacement buses during this time.

### Pedestrian access changes from Friday 25 to Monday 28 June



For more information call **1800 684 490**,

Email [projects@transport.nsw.gov.au](mailto:projects@transport.nsw.gov.au) or visit [transport.nsw.gov.au/banksia](http://transport.nsw.gov.au/banksia)

Activities during the two weekends will include:

- delivering and unloading materials and equipment
- delivering and setting up crane to install steel structures for lifts and canopies
- stormwater and utilities installation on station platforms 2 and 3
- platform and underpass regrading
- overhead wiring work on Railway Street.

Equipment to be used includes cranes, excavators, hi-rail plant, hi-rail dump truck, hi-rail work platforms, scissor lift, scaffolding, trucks, generator, and powered hand tools.

This work will be noisy at times. Wherever possible measures to reduce noise will be implemented including scheduling noisy work during daytime hours, turning off vehicles and equipment when not in use, monitoring noise, using non-tonal reversing beepers and acoustic barriers.

## **Pedestrian, traffic and parking impacts**

From **6pm Friday 25 June** to **6am Monday 28 June**, pedestrian access to the station and surrounding streets will change.

The station underpass will be temporarily closed during the weekend work. Pedestrians will be directed to detour via Subway Road, as shown on the map above. A free shuttle bus will be available between the two bus stops on Princes Highway and Railway Street.

Full and partial road closures will be in place along Taylor Avenue, Hattersley Street and Kimpton Street. Vehicle and pedestrian access will be maintained for local residents and businesses only. Parking will be limited and available for local residents only.

Traffic control and signage will be in place to direct pedestrians and motorists during the temporary changes. Please follow the directions of traffic controllers and signage, and allow extra travel time.

## **Other upcoming work**

Work will continue in June and includes:

- demolition work in the station underpass and station structure
- structural steelwork on Hattersley Street
- roofing and building work
- station toilets and building work on platforms 2 and 3
- constructing new retaining walls and new stairs on Platform 4 (Hattersley Street)
- electrical work on Hattersley Street including installing a new electrical transformer
- storm water drainage work on Hattersley Street, Railway Street and in the underpass
- electrical testing in the underpass during night time (no noise and pedestrian impact)
- a new footpath and kerb on Railway Parade (temporary bus stop relocation in place)
- a new footpath and kerb on Hattersley Street

Equipment to be used includes cranes, tipper trucks, delivery trucks, excavators, vacuum truck, powered hand tools, ground compaction equipment and concrete trucks.

## Ongoing pedestrian access and parking changes

Temporary stairs remain in place to provide access to both platforms 1 and 4. Pedestrians who require access to Platform 1 will be required to detour across Railway Street.

Up to six parking spaces will be temporarily unavailable on Railway Street to allow for the bus stop relocation. These changes are expected to be in place until Friday 18 June after which the bus stop will return to its original position on Railway Street.

Three parking spaces on Taylor Avenue and up to 12 parking spaces on Hattersley Street are temporarily unavailable as they are being used for construction vehicles and deliveries. The taxi zone on Railway Street will be unavailable at times during work near the station entrance. These changes will be in place until the end of 2021.

## Construction hours

Standard construction hours are **7am to 6pm Monday to Friday** and **8am to 1pm on Saturdays**.

For the safety of staff, customers and the community some work may be completed outside standard construction hours. Nearby residents and businesses will be notified before any work outside these hours takes place.

## Keep in touch

We will continue to keep the community informed with regular project notifications and frequent online updates published to the project website [www.transport.nsw.gov.au/banksia](http://www.transport.nsw.gov.au/banksia).

If you would like to be added to the project distribution list, or for more information about the Banksia Station Upgrade, please contact us on 1800 684 490 or email [projects@transport.nsw.gov.au](mailto:projects@transport.nsw.gov.au). For all urgent enquiries or complaints regarding construction activities, please call our 24-hour Construction Response Line on 1800 775 465.

We apologise for the inconvenience and thank you for your patience while we complete this work.



This document contains important information about public transport projects in your area. If you require the services of an interpreter, please contact the Translating and Interpreting Service on **131 450** and ask them to call Transport for NSW on **1800 684 490**. The interpreter will then assist you with translation.

### Macedonian

Овој документ содржи важни информации за проекти од јавниот транспорт во Вашата област. Доколку Ви е потребен толкувач, Ве молиме контактирајте ја Службата за Преводи и Толкување на 131 450 и побарајте да се јават во Транспорт за Нов Јужен Велс на 1800 684 490. Потоа толкувачот ќе ви помогне со преводот.

### Arabic

تتضمن هذه الوثيقة معلومات عن مشاريع النقل العام في منطقتكم. إذا كنتم بحاجة إلى خدمات مترجم، الرجاء الإتصال بخدمة الترجمة الشفهية والخطية على رقم 131 450 واطلبوا منهم أن يتصلوا بمصلحة المواصلات في نيو ساوث ويلز على رقم 1800 684 490. عندها يساعدهم المترجم بالترجمة.

### Greek

Το παρόν έγγραφο περιέχει σημαντικές πληροφορίες σχετικά με δημόσια έργα μεταφορών στην περιοχή σας. Αν χρειάζεστε τις υπηρεσίες διερμηνέα, παρακαλούμε επικοινωνήστε με την Υπηρεσία Μεταφράσεων και Διερμηνείας στο 131 450 και ζητήστε τους τηλεφωνήσουν στις Συγκοινωνίες στη ΝΝΟ στο 1800 684 490. Ο διερμηνέας θα σας βοηθήσει στη συνέχεια με τη μετάφραση.

### Simplified Chinese

这份文件包含你所在地区公共交通工程项目的重要信息。如果你需要传译服务，请致电翻译与传译服务机构，电话 131 450。要求他们为你接通交通部(Transport for NSW)，电话是 1800 684 490。传译员会为你做翻译。

For more information call **1800 684 490**,

Email [projects@transport.nsw.gov.au](mailto:projects@transport.nsw.gov.au) or visit [transport.nsw.gov.au/banksia](http://transport.nsw.gov.au/banksia)