



Transport Access Program

Como Station Upgrade

Vegetation removal at Como Station

August 2020

The NSW Government is improving accessibility at Como Station.

The upgrade will be delivered as part of the Transport Access Program, an initiative to provide a better experience for public transport customers by delivering modern, safe and accessible infrastructure.

Vegetation removal: Saturday 15 August 2020

On Saturday 15 August, up to 11 trees will be removed from an area on the Como Parade side of the station (please see the map below).

The trees need to be removed and trimmed to allow construction of a lift as part of the Station Upgrade.

The removal is in line with the project's planning approval and will be minimised as much as possible.

The trees include:

- 1 weeping bottlebrush
- 1 lemon bottlebrush
- 5 red gums
- 2 swamp oaks
- 1 spotted gum
- plus one unidentified species

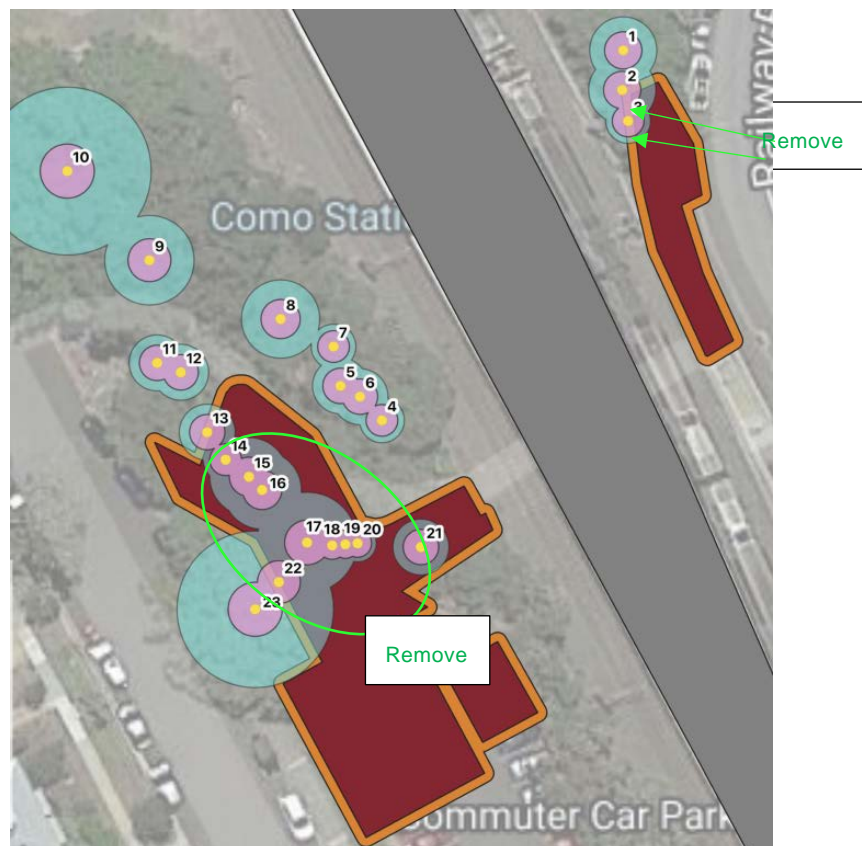
An arborist and an environmental supervisor will be on site to monitor the removal and all activities will occur within a demarcated area.

Equipment

Chainsaws and hand tools will be used to remove the trees. The branches and vegetation will also be mulched in the site compound, and retained for future use.

Transport for NSW is committed to minimising impacts on the community.

Equipment will be switched off when not in use, placed as far away from properties as possible, and the noise monitored to ensure levels are being managed effectively.



For more information call 1800 684 490,

Email projects@transport.nsw.gov.au or visit www.transport.nsw.gov.au/projects/como

For urgent enquiries or complaints regarding construction activities, please call 24 hours 1800 775 465

Other work

For the safety of our workers and the community, work to remove platform material to enable the construction of the new lift shaft will also take place from **4am Saturday 15 August to 12am Monday 17 August 2020**. This is a scheduled Sydney Trains trackwork period when trains aren't running.

The pedestrian underpass and commuter car park will also be closed while the work is completed, and a temporary detour (using Railway Road) will be in place.

Keep in touch

We will continue to keep the community informed with regular project updates. Further information is available on the project website www.transport.nsw.gov.au/como. If you would like to be added to the project distribution list, please contact us on **1800 684 490** or email projects@transport.nsw.gov.au

For all urgent enquiries or complaints regarding construction activities, please call our 24-hour Construction Response Line on **1800 775 465**.

Thank you for your patience and understanding while we complete this important work.



This document contains important information about public transport projects in your area. If you require the services of an interpreter, please contact the Translating and Interpreting Service on **131 450** and ask them to call Transport for NSW on **(02) 9200 0200**. The interpreter will then assist you with translation.