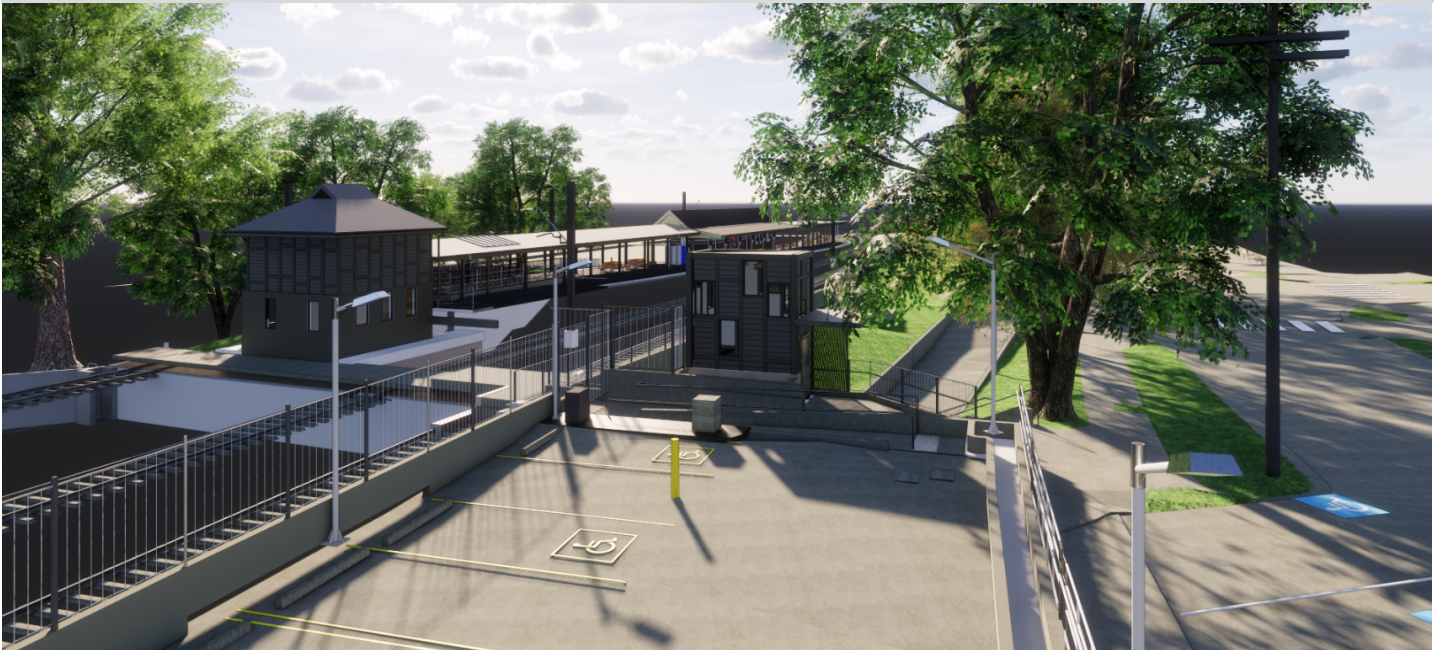


Transport Access Program

Beecroft Station Upgrade

Project Update

December 2020



Artist's impression of the new lift location looking from Wongala Crescent, subject to detailed design

Upcoming work

The Beecroft Station upgrade is underway with construction of the lift foundations in progress. Work will continue throughout December and will include:

- piling, concrete and excavation work for the lift foundations at the Wongala Crescent lift work area
- demolition and concrete work within the old booking office (in the pedestrian underpass)
- installation of site fencing along the footpath between the Sutherland Road Commuter Car Park and at the eastern entrance of the pedestrian underpass

Equipment to be used includes a piling rig, excavator, concrete trucks/pumps, delivery trucks, truck-mounted crane, power tools and hand tools.

Temporary station access changes

The stairs and ramp between Wongala Crescent Commuter Car Park and the station will be closed until **late 2021**, to allow for construction work to be carried out.

Commuters can continue to access the station via the pedestrian underpass tunnel and ramp.

Temporary commuter car park changes

Four parking spaces in the south-western corner of Wongala Crescent Commuter Car Park will be closed until **late November 2021**, to allow construction work to be carried out.

Two accessible parking spaces have been temporarily relocated from Wongala Crescent Commuter Car Park to Sutherland Road Commuter Car Park. Untimed parking is also available on nearby streets.

Construction hours

Standard construction hours are **7am to 6pm Monday to Friday** and **8am to 1pm on Saturdays**.

For the safety of our workers, rail customers and the community, some station upgrade work will be completed outside standard construction hours. Nearby residents and businesses will be notified before any out of hours work takes place.

From **Thursday 24 December 2020** to **Monday 11 January 2021** our project and offices will be closed to provide the community and our staff with a break from construction work.

We wish you and your loved ones a safe and happy holiday season and look forward to working together to deliver Beecroft Station Upgrade throughout 2021.

Keeping the community informed

The community will be kept informed with regular project notifications and information via the project website: transport.nsw.gov.au/beecroft.

For further information on the project please call the Project Infoline on **1800 684 490** or email projects@transport.nsw.gov.au.

For all urgent enquiries or complaints regarding construction activities, please call our 24-hour Construction Response Line on **1800 775 465**.

Simplified Chinese

这份文件包含你所在地区公共交通工程项目的重要信息。如果你需要传译服务，请致电翻译与传译服务机构，电话131 450，要求他们为你接通交通部 (Transport for NSW)，电话是 (02) 9200 0200。传译员会为你做翻译。

Tamil

இந்த ஆவணம் உங்கள் பகுதியில் பொது போக்குவரத்து திட்டங்கள் பற்றி முக்கியமான தகவல்களை கொண்டுள்ளது. மொழிபெயர்ப்பாளரின் சேவைகள் தேவைப்படும் பட்சத்தில், மொழி மற்றும் உரைபெயர்ப்பு சேவையுடன் 131 450 இல் தொடர்பு கொண்டு அவர்களை (02) 9200 0200 எனும் தொலைபேசி இலக்கத்துடன் தொடர்பு கொள்ளச் சொல்லவும். மேற்கொண்டு தேவைப்படும் மொழிபெயர்ப்பு வசதிகளை குறிப்பிட்ட உரைபெயர்ப்பாளர் வழங்குவார்.

Korean

이 문서는 귀하의 해당 지역에 있는 대중교통 프로젝트에 관한 중요한 정보를 담고 있습니다. 통역사 서비스가 필요하시면 통번역서비스에 131 450으로 연락하셔서 이들에게 NSW 대중교통 (Transport for NSW)에 (02) 9200 0200으로 연락하도록 요청하십시오. 그러면 통역사가 번역과 함께 귀하를 도와드릴 것입니다.

Hindi

इस दस्तावेज में आपके इलाके के सार्वजनिक-परिवहन परियोजनाओं के बारे में महत्वपूर्ण जानकारी सम्मिलित है। यदि आपको दुभाषिण की सेवा की आवश्यकता है तो कृपया 131 450 पर टैन्सलैटिंग एंड इन्टर्प्रैटिंग सर्विस से संपर्क करें और उनसे (02) 9200 0200 पर टैन्सपोर्ट फ़ॉर एनएसडब्ल्यू को फ़ोन करने के लिए कहें। उसके बाद दुभाषिया आपको अनुवाद करने में सहायता देगा।



This document contains important information about public transport projects in your area. If you require the services of an interpreter, please contact the Translating and Interpreting Service on **131 450** and ask them to call Transport for NSW on **(02) 9200 0200**. The interpreter will then assist you with translation.

For more information call **1800 684 490**.

Email projects@transport.nsw.gov.au or visit transport.nsw.gov.au/beecroft

For urgent enquiries or complaints regarding construction activities, please call 24 hours **1800 775 465**