

Fleet update

We have a transport plan for NSW that's focused on making trips faster, easier and safer. We're investing \$51.2 billion in long overdue improvements in roads and public transport to ensure infrastructure keeps pace with our needs.

Part of this investment will deliver new trains for regional, intercity and metropolitan customers. Our new trains will provide more comfortable, reliable, efficient and accessible journeys for our customers. To keep you informed, we will regularly provide an update on our new fleet projects. If you would like to subscribe to this newsletter please send an email to projects@transport.nsw.gov.au.

Regional Rail fleet maintenance facility approved

A purpose-built maintenance facility in Dubbo will be the home base for new regional trains when they start to enter service in the early-2020s. The maintenance facility will stimulate the local economy by creating jobs and opportunities for local business during the construction and operation stages.

Transport for NSW approved the proposal for the Dubbo Maintenance Facility in October 2018.

Community feedback

Earlier this year the local community were given the opportunity to provide feedback on the proposal for the maintenance facility at Dubbo.

Planning documents outlined the impact the new maintenance facility would have on the local area and how those impacts would be mitigated.

15 submissions were received during the public display period. The most common factors raised were:

- environmental concerns such as noise and vibration, contamination, dust and air quality, and flooding and groundwater
- traffic issues such as the local road network and heavy vehicles
- design features and alternative site locations
- property concerns including access
- consultation with community and stakeholders.

Determination Report

A summary of the issues raised by the community and Transport for NSW's response is provided in our Determination Report. This report and frequently asked questions are now available to view online at www.transport.nsw.gov.au/projects/current-projects/regional-rail



We were at the Koori Knockout

[see more on the back page](#)

Next steps

We expect to award the contract for the project in early 2019. The contract covers the design, build, financing and maintenance of the new regional rail fleet and the Dubbo Maintenance Facility. Detailed design and construction of the maintenance facility is expected to start in early 2019.

For more information call 1800 684 490

Email projects@transport.nsw.gov.au or visit transport.nsw.gov.au/projects

For urgent enquiries or complaints regarding construction activities, please call 24 hours 1800 775 465

New Intercity Fleet

The NSW Government is delivering a New Intercity Fleet to replace trains currently carrying customers from Sydney to the Central Coast, Newcastle, the Blue Mountains and the South Coast.

The new state-of-the-art trains will replace the ageing V-Sets to provide customers with a more comfortable and reliable journey. The trains will feature:

- wider, more spacious two by two seating for extra room and comfort
- arm rests, tray tables and high seat backs
- charging ports for mobile devices
- dedicated spaces for luggage, prams and bicycles
- improved accessibility including wheelchair access and accessible toilets
- improved customer information through digital information screens and announcements
- CCTV and help points
- modern heating, ventilation and air conditioning.

Manufacturing of the new trains is now underway, with 32 carriages currently in production. Detailed design of the interior features of the train is nearing completion.

The first trains in the New Intercity Fleet will begin customer service on the Central Coast and Newcastle Line late next year. New trains will start operating on the Blue Mountains Line in mid-2020 and the South Coast in 2021.

Customer engagement

The process for designing the New Intercity Fleet has included a range of engagement activities with customers.

Customer groups have been asked for feedback on the proposed designs, including vision, mobility, hearing and cognitive impaired groups, aged customers and those travelling with children, luggage and bicycles.

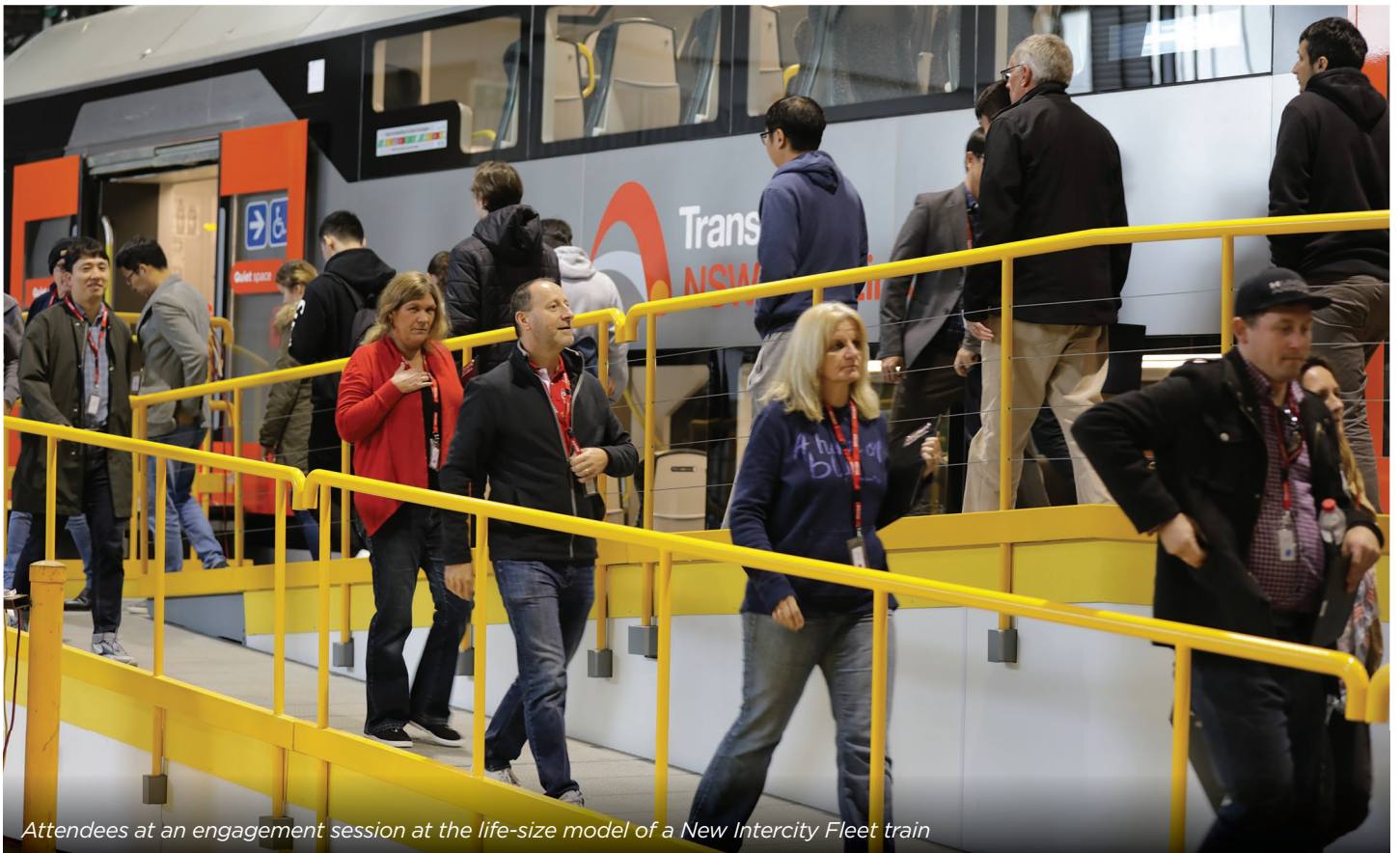
A life-size model of the new train, built to replicate the train during the detailed design phase, has allowed staff and customers to gain a first-hand experience of the new train.

The model has been used to conduct end-user stakeholder engagement to inform and refine the design of the new train.

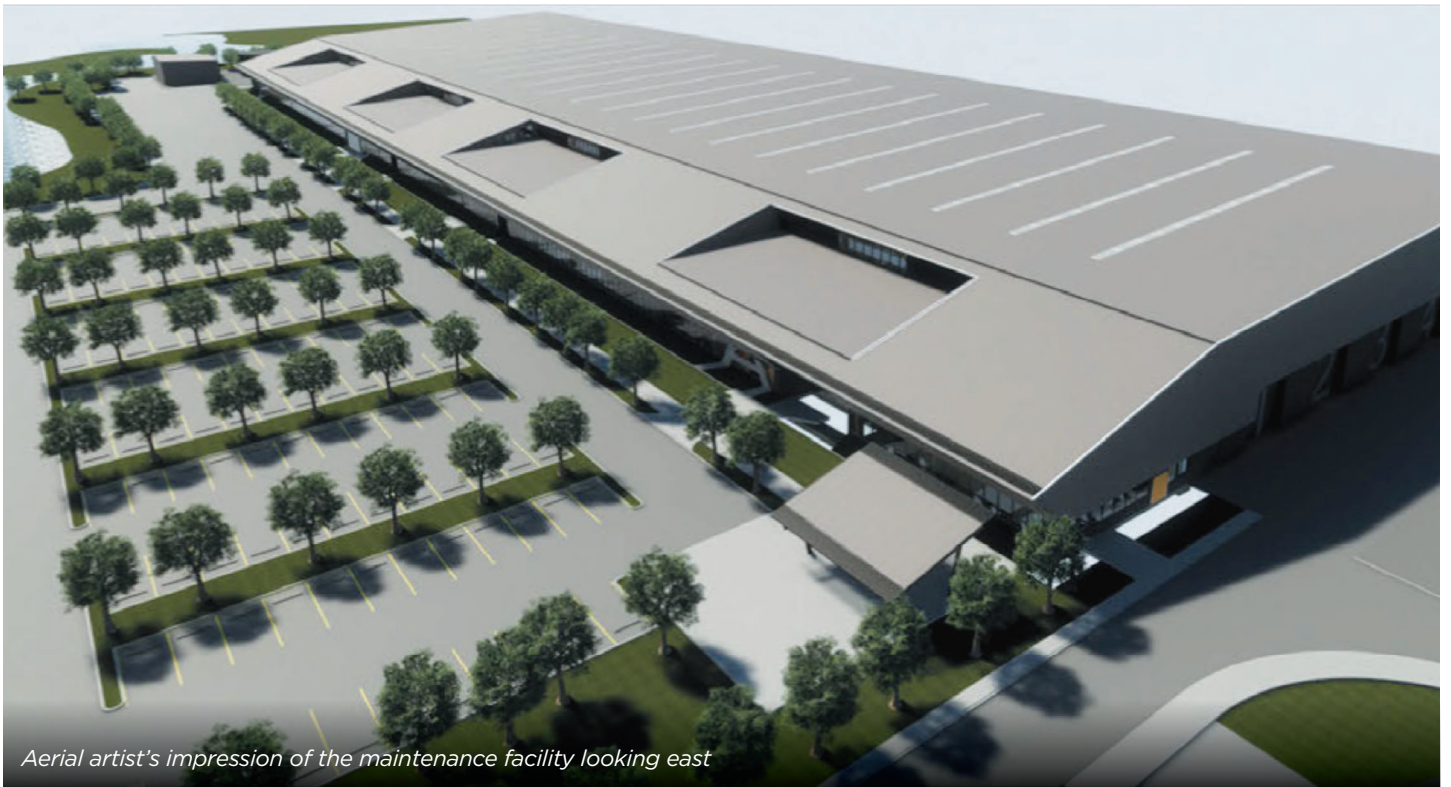
Feedback provided by the groups will be incorporated into the final design and include improvements to seat comfort, floor coverings and stairway areas, lighting, toilets and colour schemes.

We would like to thank everyone for the time and commitment they brought to the engagement program and design process.

More information about the engagements can be found in a short video on the project website - www.transport.nsw.gov.au/projects/current-projects/new-intercity-fleet.



Attendees at an engagement session at the life-size model of a New Intercity Fleet train



Aerial artist's impression of the maintenance facility looking east

Maintenance facility

Major construction work is increasing at the maintenance facility site at Kangy Angy, including earthworks, trenching and the relocation of high voltage power, gas and telecommunications services. Construction of a new access road bridge is also underway, starting with the installation of the bridge foundations.

The new bridge will provide access to the maintenance facility from Enterprise Drive as well as a link to Enterprise Drive for residents on Orchard Road.

When complete, the bridge will be around 350 metres long and include a new roundabout connection to Enterprise Drive. It will also include a path and anti-throw safety screens.

To help reduce the impact of construction, and reduce disruption to residents the design for the bridge has been innovatively revised to significantly reduce the number of pillars which need to be installed.

Springwood to Lithgow rail corridor modifications

All planning approvals are now in place for modifications required along the rail corridor from west of Springwood Station to Lithgow Station to accommodate the new trains. This includes minor modifications to the Ten Tunnels Deviation (between Newnes Junction Station and Zig Zag Station). Work will include minor trackwork, changes to signalling and platform extensions where required.

The project is an integral part of the New Intercity Fleet Program and will enable trains to service customers all the way to Lithgow.

Work to upgrade the Blue Mountains line will start in early 2019 with the first new trains operating on the line from mid-2020 to Lithgow.

To minimise impacts of the local community, the majority of this work will be completed during scheduled Sydney Trains trackwork periods.

Stations and signalling modifications

Work is underway at various locations across the electrified rail network to support the introduction of the New Intercity Fleet and allow for improved technology on the new trains.

Work includes minor trackwork, changes to signals and platform extensions where required. The project also includes installing equipment that enables Automatic Selective Door Operation - which will ensure that doors open only when adjacent to the platform.

The new trains will also have traction interlocking which means the train won't power-up unless the doors are registered as closed.

Upgrading existing facilities

Modifications to existing maintenance and stabling facilities to accommodate the New Intercity Fleet at Eveleigh, Broadmeadow, Wollongong, Gosford and Port Kembla are now complete.

Would you like to know more?

Visit transport.nsw.gov.au/projects/current-projects/new-intercity-fleet

Eight new Waratah Series 2 trains now in service

There are now eight new Waratah Series 2 trains in customer service. These new trains, part of the More Trains More Services program, are operating on the T2 Inner West and Leppington, T3 Bankstown and T8 Airport and South Lines.

Bright, eye catching artwork has been affixed to the interior and exterior of the new trains to celebrate their arrival onto the network.

The new Waratah Series 2 trains are fully air-conditioned and have improved technology including new interior and exterior CCTV cameras to enhance security; high definition in-train screens to keep customers informed throughout their trip and upgraded interior LED lighting.

The entire Waratah Series 2 fleet trains will progressively come into service over the next six months.



Artwork on the first Waratah Series 2 train

Would you like to know more? Visit transport.nsw.gov.au/projects/current-projects/Sydney-growth-trains

Fleet team at Koori Knockout

On 28 and 29 September we held an information stall at the 48th annual NSW Indigenous Koori Knockout.

The popular rugby league event, attended by over 30,000 people, is regarded as one of the most significant gatherings for Indigenous people in Australia. This was an opportunity to engage with the Aboriginal community about the Regional Rail Fleet Project, including job and business opportunities in Dubbo.



This document contains important information about public transport projects in your area. If you require the services of an interpreter, please contact the Translating and Interpreting Service on **131 450** and ask them to call Transport for NSW on **(02) 9200 0200**. The interpreter will then assist you with translation.

For more information call 1800 684 490

Email projects@transport.nsw.gov.au or visit transport.nsw.gov.au/projects

For urgent enquiries or complaints regarding construction activities, please call 24 hours 1800 775 465

